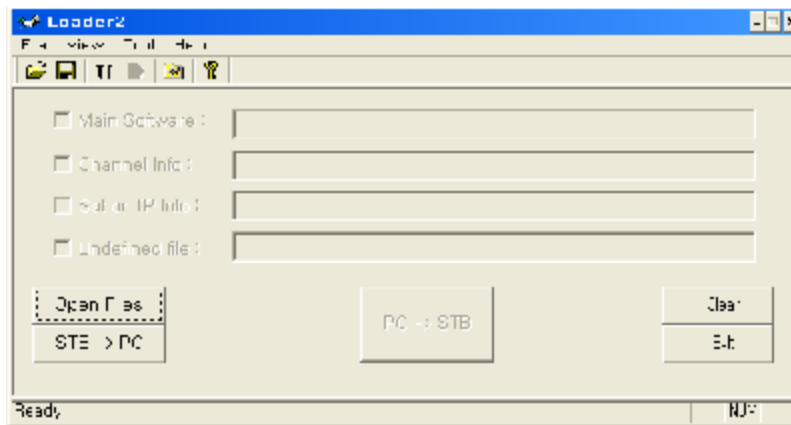


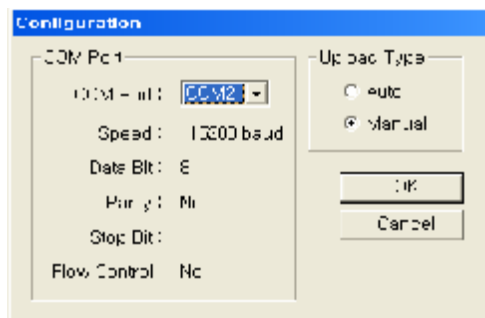
Loader2 User Guide

“Loader2” can download the firmware from PC to STB.

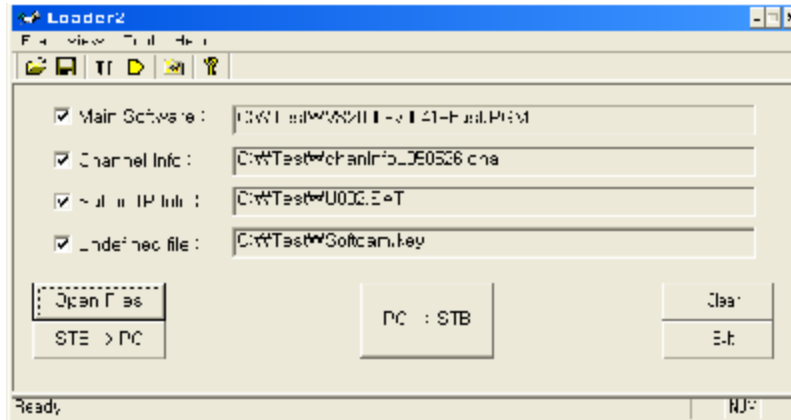
1. Install “Loader2” to your PC.
- 2. PLUG OUT YOUR STB FROM OUTLET.**
3. Connect “NULL MODEM CABLE” between PC and STB.
4. Run “Loader2” on PC.



5. Run the “Tool->Configuration” menu and select serial port what you use.

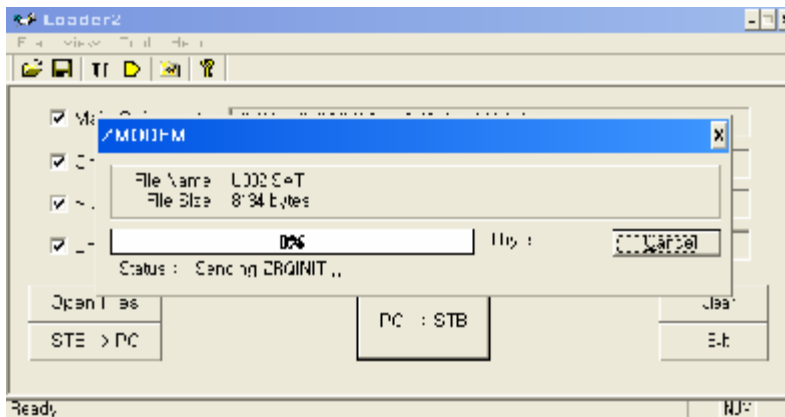


6. Press **“Open File”** button and select the file what you want to download.

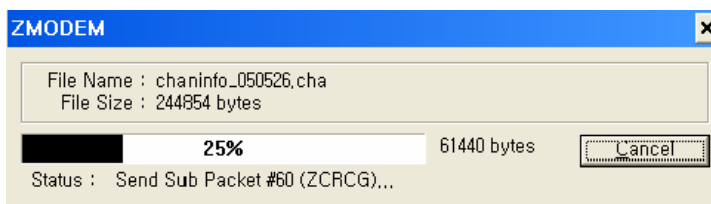


7. And then press **“PC->STB”** button.

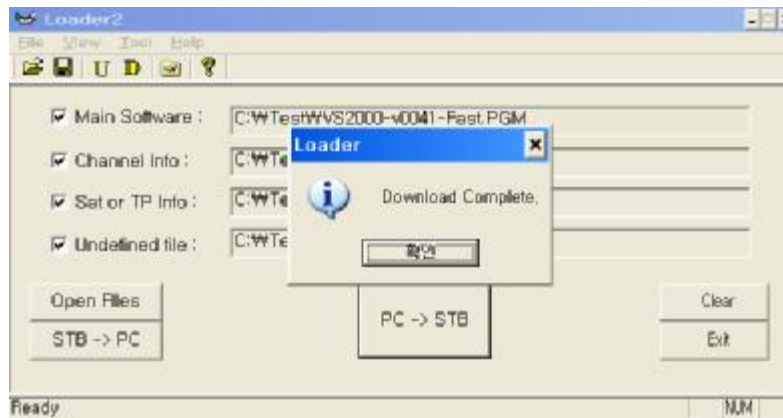
WHEN ZMODEM WINDOW IS APPEARING, PLUG IN YOUR STB.



8. Then selected file will download from PC to STB.



9. When download is complete, you can see below message.



**When you see this dialog on PC, STB will start to write flash memory.
Please wait until STB automatically reboot.**